

Product datasheet

HE 21 W/840

LUMILUX T5 HE | Tubular fluorescent lamps 16 mm, high efficiency, with G5 base



- Public buildings Offices Shops Supermarkets and department stores Industry Outdoor applications only in suitable luminaires

- Good economy and efficiency Up to 20 % more economical than LUMILUX T8 Up to 50 % smaller volume than comparable T8 lamps



Product datasheet

Technical data

Electrical data

Nominal current	0.17 A A
-----------------	----------

Photometrical data

Luminous flux at	2000 lm
Light color (designation)	LUMILUX Cool White
Rated LLMF at 2,000 h	0.95
Rated LLMF at 4,000 h	0.92
Rated LLMF at 6,000 h	0.91
Rated LLMF at 8,000 h	0.9
Rated LLMF at 12,000 h	0.9
Rated LLMF at 16,000 h	0.9
Rated LLMF at 20,000 h	0.89
Luminous flux	2000 lm

Dimensions & weight



Tube diameter	16 mm
Length with base excl. base pins/connection	849,00 mm
Product weight	70.92 g
Overall length	863.20 mm

Lifespan

Service life	19000 h
--------------	---------

Additional product data

Mercury content	1.5 mg
-----------------	--------

Product datasheet

Product remark	Suitable for ECG operation only Lamp designed for internal luminaire temperatures of 30...40 °C; optimum luminous flux achieved at 35 °C
Appropriate disposal acc. to WEEE	Yes
Successor EAN	4050300591407
Predecessor EAN	4050300464701

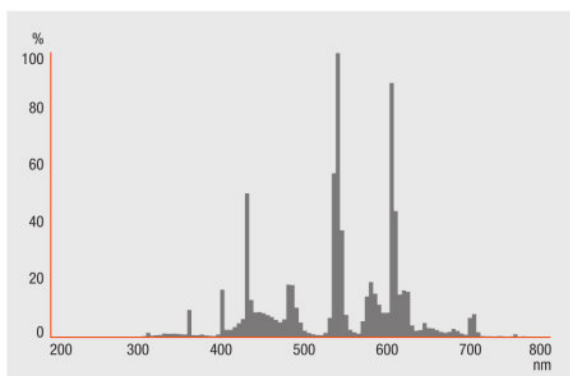
Certificates & standards

Energy efficiency class	F
Energy consumption	21.00 kWh/1000h

Environmental information

Information according Art. 33 of EU Regulation (EC) 1907/2006 (REACH)	
Date of Declaration	18-04-2022
Primary Article Identifier	4050300591407 4050300464701
Declaration No. in SCIP database	In work

Light Distribution

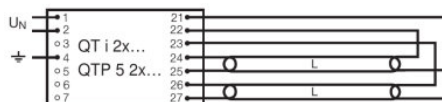
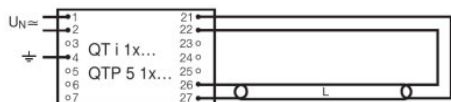


FL_840

Product datasheet

System guarantee

OSRAM System+ Guarantee in combination with OSRAM ECGs



QUICKTRONIC INTELLIGENT QT i 1x QTP 5 1x

QUICKTRONIC INTELLIGENT QT i 2x QTP 5 2x

Ecodesign regulation information:

Separate control gear and light sources must be disposed of at certified disposal companies in accordance with Directive 2012/19/EU (WEEE) in the EU and with Waste Electrical and Electronic Equipment (WEEE) Regulations 2013 in the UK. For this purpose, collection points for recycling centres and take-back systems (CRSO) are available from retailers or private disposal companies, which accept separate control gear and light sources free of charge. In this way, raw materials are conserved and materials are recycled.

Logistical Data

Product code	Product description	Packaging unit (Pieces/Unit)	Dimensions (length x width x height)	Volume	Gross weight
4050300464701	HE 21 W/840	Shipping carton box 40 Pieces Sleeves	896 mm x 194 mm x 87 mm	15.12 dm ³	3962.00 g
4050300591407	HE 21 W/840	Shipping carton box 20 Pieces Sleeves	891 mm x 104 mm x 88 mm	8.15 dm ³	2283.00 g

The mentioned product code describes the smallest quantity unit which can be ordered. One shipping unit can contain one or more single products. When placing an order, for the quantity please enter single or multiples of a shipping unit.

References / Links

For more information on the system guarantee and the terms and conditions of the guarantee visit [https://](https://www.inventronics-light.com/multilevel-guarantees)

▶ www.inventronics-light.com/multilevel-guarantees

Product datasheet

Disclaimer

Subject to change without notice. Errors and omission excepted. Always make sure to use the most recent release.

OSRAM is distribution partner
of LEDVANCE of LAMPS

OSRAM

OSRAM GmbH
Marcel-Breuer-Strasse 6
80807 Munich, Germany

HE 21 W/840

LUMILUX T5 HE | Tubular fluorescent lamps 16 mm, high efficiency, with G5 base

Product name	Product name ECG	EAN	Nominal current	Nominal wattage + Power loss	Power factor λ [PIM]	Luminous flux at 35 °C
HE 21 W/840	QT-FIT 5 1x14-35	4008321971234	0.11 A	23.00 W	0.95	1900 lm
	QT-FIT 5 2x14-35	4008321971258	0.22 A	46.00 W	0.98	1900 lm
	QTi 1x14/24/21/39 GII	4008321383334	0.11 A	24.00 W	0.94 c	1900 lm
	QTi 1x28/54/35/49 GII	4008321383358	0.11 A	24.00 W	0.94 c	1900 lm
	QTi 1x35/49/80 GII	4008321383372	0.11 A	25.00 W	0.99	1900 lm
	QTi 2x14/24/21/39 GII	4008321383396	0.20 A	45.00 W	0.96	1900 lm
	QTi 2x21/39 DIM	4050300870694	0.21 A	45.00 W	0.96	1900 lm
	QTi 2x28/54/35/49 GII	4008321383419	0.20 A	45.00 W	0.96	1900 lm
	QTi 2x35/49/80 GII	4008321658951	0.23 A	49.00 W	0.96	2000 lm
	QTP5 1x14-35	4008321329035	0.11 A	24.00 W	0.95	1900 lm
QTP5 2x14-35	4008321329073	0.20 A	45.00 W	0.98	1900 lm	

Product name	Product name ECG	EAN	Number of lighting outlets
HE 21 W/840	QT-FIT 5 1x14-35	4008321971234	1
	QT-FIT 5 2x14-35	4008321971258	2
	QTi 1x14/24/21/39 GII	4008321383334	1
	QTi 1x28/54/35/49 GII	4008321383358	1

Product datasheet

Product name	Product name ECG	EAN	Number of lighting outlets
	QTi 1x35/49/80 GII	4008321383372	1
	QTi 2x14/24/21/39 GII	4008321383396	2
	QTi 2x21/39 DIM	4050300870694	2
	QTi 2x28/54/35/49 GII	4008321383419	2
	QTi 2x35/49/80 GII	4008321658951	2
	QTP5 1x14-35	4008321329035	1
	QTP5 2x14-35	4008321329073	2